



Bathymetric and Sonar Data Processing and Production

CARIS HIPS & CARIS SIPS

Hydrography. Cable and Pipeline Routing. Minecountermeasures. Side Scan search and recovery. Geophysical Exploration. Management of Fisheries. No matter what the application, the reliability and usability of your cleaned bathymetric and side scan sonar survey data is critical.

Based on its reputation for rigorous and proven algorithms, CARIS HIPS, for processing large bathymetric datasets, and CARIS SIPS, for processing side scan sonar imagery and multibeam backscatter data, have been selected number one among marine and hydrographic specialists for over 10 years.

PURPOSE-BUILT PROCESSING

Area and line based cleaning, 3D visualization, integrated sensor cleaning tools. These are but a few of the features that clearly suggest one thing: CARIS HIPS and CARIS SIPS are purpose-built processing and production systems.

INFORMATION YOU CAN USE

Tiling, contours, depth areas, shoal-biased sounding selection and an interactive dynamic profile are among the multitude of outputs that can be generated from your clean bathymetry and sonar data. Bottom line, CARIS software turns your survey data into information you can use.

ENGINEERED TO WORK TOGETHER

CARIS software systems are engineered to work together. CARIS HIPS and CARIS SIPS are standalone systems but are also capable of operating in unison offering the functionality and format support allowing you to take your clean data further.

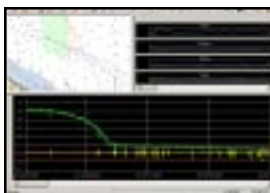
BUILT TO GROW ON

Open an S-57 ENC file and display the data with other data types such as BSB, HCRE, and GeoTIFF as well as vector CARIS map data. Regardless of your current workflow, CARIS HIPS and CARIS SIPS are built to grow on.

CARIS HIPS and CARIS SIPS are backed by training from subject matter experts, assistance in data production flowline implementation, and by knowledgeable and responsive support personnel.

Review the suite of CARIS HIPS and CARIS SIPS products described on the reverse side and contact **CARIS** today about a solution that is right for you.

CARIS HIPS & CARIS SIPS Product Suite



HIPS Singlebeam

Supported Formats:

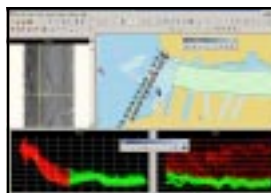
- Hypack, Winfrog
- Generic ASCII Data

Data Cleaning:

- Interactive singlebeam depth cleaning
- Automatic singlebeam spike filters

Data Processing:

- Apply tides / zoning
- Apply SV corrections



HIPS Multibeam Lite

Supported Formats:

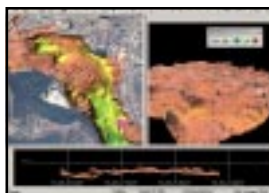
- *HIPS Singlebeam, PLUS*
- Atlas, Furuno, GSF, LADS, Seabeam / Elac, SeaFalcon, Simrad, UNB, XTF

Data Cleaning:

- *HIPS Singlebeam, PLUS*
- Interactive swath cleaning
- Automatic swath filters
- Refraction repair
- Integrated side scan display

Data Processing:

- Apply tides / zoning
- Apply SV corrections



HIPS Multibeam Professional

Supported Formats:

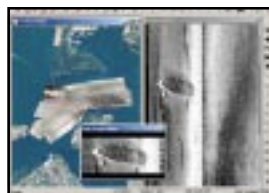
- *same as HIPS Multibeam Lite*

Data Cleaning:

- *HIPS Multibeam Lite, PLUS*
- 3D subset area cleaning
- Statistical surface cleaning

Data Processing:

- *HIPS Multibeam Lite, PLUS*
- Weighted gridding



SIPS Lite

Supported Formats:

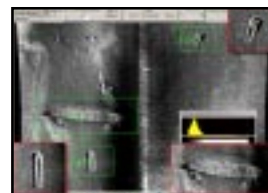
- Cmax, Coda, EdgeTech, GSF, MarineSonic, Qmips, Segy, XTF
- Generic ASCII Data

Data Cleaning:

- Side Scan viewing and cleaning
- Digitize towfish altitude

Data Processing:

- Re-compute towfish navigation
- Slant range correction
- Mosaic



SIPS Professional

Supported Formats:

- *same as SIPS Lite*

Data Cleaning:

- *same as SIPS Lite*

Data Processing:

- *SIPS Lite, PLUS*
- Generate side scan contacts database

HIPS & SIPS Common

Data Tools:

- Vessel configuration
- Tide / Svp preparation
- Attitude / Navigation cleaning
- GPS RTK Tide
- Background displays (CARIS, S-57, BSB, HCRF, TIF...)

Mapping Tools:

- Variable depth tiling
- Sounding selection
- Contouring
- Plotting

For more information on **CARIS HIPS** and **CARIS SIPS** contact:

CARIS

264 Rookwood Avenue
Fredericton, New Brunswick
E3B 2M2 Canada
Tel +1.506.458.8533
Fax +1.506.459.3849
info@caris.com
www.caris.com

CARIS BV

Mgr. van Oorschotstraat 13
PO Box 47 5473 ZG
Heeswijk The Netherlands
Tel +31.413.296010
Fax +31.413.296012
sales@caris.nl
www.caris.nl

CARIS USA

11750 Frederick Road
Ellicott City, MD
21042 USA
Tel +1.410.531.5129
Fax +1.410.531.5759
info@caris.com
www.caris.com



CARIS software and the **CARIS** logo are registered trademarks of **CARIS**.
Other brands and product names are registered trademarks or trademarks
of their respective holders. ©2001 **CARIS**. All rights reserved.